



HSE Alert: Adverse Weather

By Dubai Healthcare City Authority - Regulatory

HSE Alert: Adverse weather

Dear Valued Partner,

As a health and wellness destination, it is essential that we, the Dubai Healthcare City Community, promote best practice in Health, Safety and Environment (HSE).

The HSE Department at Dubai Healthcare City Authority – Regulatory (DHCR) plays a vital role in promoting the health and safety of all members of the DHCC Community, ensuring partners take proactive measures to prevent the occurrence of avoidable emergencies and incidents.

With this in mind, the HSE Department brings to your attention potential environmental safety concerns for all buildings in the free zone in the event of adverse weather. For example, water-clogged roads (pictured below) during rains.

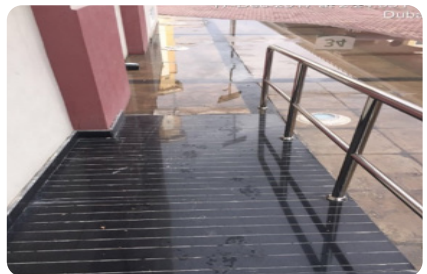


Guidelines for all building property managers

It is mandatory for partners in the DHCC Community to regularly carry out safety inspections within their buildings to avoid potential hazards. Property managers should have a task force for emergency planning.

Pre-adverse weather inspection:

- Ensure clear access / egress at ramps and entrances (pictured) to reduce trip hazard.
- Place water mats inside all entrances to contain excess rain water being brought in.
- Secure all balconies and roof doors.
- Remove electrical items from exterior locations.
- Open and clean the rainwater from the building's drainage.
- Remove waste skips and / or close these.
- Keep road / pedestrian paths clear by removing debris and other waste material.
- Ensure each building has an adverse weather emergency contingency plan which should factor in flow of water drainage.



HSE Alert: Adverse weather



Inspection during adverse weather:

- Stop any ongoing activity in confined spaces during adverse weather.
- Safely store and secure compressed gases.
- Stop any outdoor electrical works immediately.
- Assess specialist contractors on site and stop ongoing work being carried out in confined spaces or at heights as well as outdoor electrical and roof work.
- Closely monitor pedestrian and vehicular traffic flow (pictured above).

Post adverse weather inspection:

- Building integrity assessment to inspect the balconies, ceilings and roofs should be carried out by authorized, trained certified personnel.
- Facilities engineer should review all the critical utilities to ensure these are not compromised.

Examples include:

- Fire alarm control panel
- Elevators and escalators
- Heating and ventilation systems
- Medical gas systems (where applicable)
- Plumbing water systems (water quality not effected)
- Electrical power control systems

For advice and guidance, please contact:

Sarah Mansfield

Senior Manager

Health, Safety and Environment (HSE) Department

Dubai Healthcare City Authority – Regulatory

04 3838300 (ext 8321) or email Sarah.Mansfield@dhcr.gov.ae.



سلطة مدينة دبي الطبية
Dubai Healthcare City Authority
القطاع التنظيمي - Regulatory